



KINGFISHER

WELDED ADVENTURE BOATS

WARRANTY POLICY



KINGFISHER BOATS WARRANTY POLICY

Congratulations on the purchase of your new KingFisher boat, and welcome to the KingFisher Family! KingFisher Boats Inc. (hereinafter referred to as “KingFisher”) incorporates the latest innovations in aluminum boat manufacturing. Over 60 years of research, manufacturing experience, and listening to our customers has produced the boat you own today. You can be assured that your new KingFisher boat will provide you with years of worry-free operation and enjoyment. With superior styling and performance, KingFisher is leading the industry in quality and design. Thank you for choosing KingFisher.

For the purposes of this Warranty, the following terms and phrases have the meanings ascribed as follows:

- (a) “**Commercial Users**” means any person that purchases a KingFisher boat new from an authorized KingFisher dealer that is not an Original Retail Owner (definition below);
- (b) “**Damage**” includes any sort of damage, failure or malfunction whatsoever, and “**Damaged**” has a corresponding meaning;
- (c) “**Factory**” or “**KingFisher Factory**” means the location of manufacture and assembly of a KingFisher boat prior to shipping or delivery to an authorized KingFisher dealer;
- (d) “**Lifetime**” means a period of twenty (20) years from the Original Date of Manufacture of a KingFisher boat;
- (e) “**Original Date of Manufacture**” means the date established in KingFisher’s records as being the date on which the manufacture of the KingFisher boat was complete;
- (f) “**Original Retail Owner**” means any individual, or entity, who purchases a KingFisher boat new from an authorized KingFisher dealer and only uses the KingFisher boat for personal, non-commercial purposes.
- (g) “**Subsequent Personal Owner**” means any individual, or entity, who purchases a KingFisher boat used from an authorized KingFisher dealer, the Original Retail Owner or a subsequent retail owner and only uses the KingFisher boat for personal, non-commercial purposes.
- (h) “**Warranty**” means this document in its entirety, including any and all terms, provisions, and conditions herein and all schedules and appendices hereto.

ORIGINAL RETAIL OWNER

We stand behind our KingFisher boats by offering the following KingFisher promise to the Original Retail Owner, under normal, non-commercial use, subject to all other terms, conditions and exclusions of this Warranty:

1. One (1) year bow to stern warranty that all parts and components sold and supplied by KingFisher as part of the original manufacture and assembly at a KingFisher Factory will be free from defects in material or workmanship.

2. Two (2) year bow to stern warranty that paint will be free from material and/or application/workmanship defects. This does not include corrosion. See your KingFisher boat manual for more information on corrosion.
3. Lifetime warranty that the hull, and any main seam welds (side to chine, transom, center keel) will be free from structural defects in material or workmanship for a period commencing on the date of purchase of the KingFisher boat by the Original Retail Owner and ending on the expiry of the Lifetime of the KingFisher boat.

The foregoing warranties are non-transferrable and shall cease to apply, and no coverage under such warranties shall be available, on or after the first to occur of: (i) any sale, transfer, lease, rental or other disposition of the KingFisher boat by the Original Retail Owner; and (ii) any non-personal or commercial use of the KingFisher boat during the period of ownership by the Original Retail Owner.

The foregoing warranties are valid and enforceable only if the warranty registration card provided at the time of the sale (and available thru the website "<https://kingfisherboats.com/warranty-manuals/>") is returned or submitted to KingFisher within 30 days of the date of purchase by the Original Retail Owner.

SUBSEQUENT PERSONAL OWNERS

Subsequent Personal Owners may request a non-transferrable *Limited Lifetime Warranty*. The request must be: (i) made on the applicable form established by KingFisher from time to time which shall require the Subsequent Personal Owner to agree to all terms and conditions set out in such form; (ii) accompanied by an administrative fee as set by KingFisher from time to time (as of July 1, 2024 it is \$750.00 plus applicable taxes); and (iii) accompanied by high-resolution photos clearly showing the current condition of the KingFisher boat. KingFisher reserves the right to accept or refuse any request for a *Limited Warranty* in its unfettered discretion and may act arbitrarily in assessing any such request. The scope of coverage afforded by this *Limited Warranty*, subject to all other terms, conditions and exclusions of this Warranty, is as follows:

That the hull, and any main seam welds (side to chine, transom, center keel) will be free from structural defects in material or workmanship for a period ending on the 10th anniversary of the Original Date of Manufacture of the KingFisher boat.

Any *Limited Warranty* approved by KingFisher is non-transferrable and shall cease to apply, and no coverage under such warranty shall be available, on or after the first to occur of: (i) any sale, transfer, lease, rental or other disposition of the KingFisher boat by the Subsequent Personal Owner in respect of whom the *Limited Warranty* was approved; and (ii) any non-personal or commercial use of our product during the time of ownership of the KingFisher boat by the Subsequent Personal Owner.

COMMERCIAL USERS

KingFisher's warranty for Commercial Users is limited to major structural defects for a period of one year from the original date of sale only, and is subject to all other terms, conditions and exclusions of this Warranty. There is no commercial use warranty for parts, components, or paint. The warranty for Commercial Users is non-transferrable and shall cease to apply, and no coverage under such warranty shall be available, on or after any sale, transfer, lease, rental or other disposition of the

KingFisher boat by the commercial user. This warranty is valid and enforceable only if the warranty registration card provided at the time of the sale (and available thru the website “<https://kingfisherboats.com/warranty-manuals/>”) is returned or submitted to KingFisher within 30 days of the date of purchase.

OTHER USERS

No warranty coverage is provided or offered to any person or entity owning or using a KingFisher boat at any time other than as set out above.

WARRANTY TERMS

This warranty applies to all KingFisher boats manufactured on or after June 1, 2024.

Exclusions: Notwithstanding any other provision of this Warranty, this Warranty does not apply to or provide coverage for:

1. Paint peeling, scratches, chips, blistering, flaking, chalking, fading or Damage from fuel spills or harmful solvents, or anti-fouling bottom paint.
2. Normal wear and tear items, including but not limited to paint, decking materials, anodes, or windshield wipers.
3. Corrosion, caused by but not limited to: dissimilar metals, reversed polarity connections, inadequate cleaning or maintenance, worn anodes or saltwater.
4. Damage resulting from alterations or modifications to the boat.
5. Damage caused by commercial use, accident, theft, misuse (including failure to properly trim boat while running), abuse, lack of reasonable and necessary maintenance (must show maintenance records/logs), or willful damage. Exceeding the stated horsepower rating, or load capacities will void all warranty coverage.
6. Damage caused by towing, or being towed by another vessel.
7. Damage caused by improper loading, unloading, or while on a trailer.
8. Damage occurred while in storage, moorage, or while tied to a dock.
9. Damage occurred due to blocked drainages.
10. Damage occurred due to any impact, including running aground.
11. Leaking around windows, latches, hatches, and other apertures.
12. Glass breakage.
13. Damage to furniture upholstery, protective covers, carpet, or wood.
14. Damage caused by water freezing or operation in subzero temperatures.
15. Loss of time, damage to personal property, transportation, or other incurred costs.
16. Any component not supplied and installed by KingFisher, or Damage caused by installation of any such component. If you are unsure of what is Factory-fitted or otherwise, please contact your nearest authorized KingFisher dealership for clarification.
17. Engines, out drives, jet drives, propellers, batteries, or trailers (see below)

Third Party Component Parts (parts not manufactured by KingFisher) outside of the KingFisher 1 year warranty available to the Original Retail Owner, may be further warranted by their respective

manufacturer. Applicable warranty policies or statements not delivered with the boat can be requested from the KingFisher Factory. It is the responsibility of the owner to request component warranty coverage from the respective manufacturer.

Third Party Component Parts normally covered by separate manufacturer warranties include:

1. Engines, out drives, jet drives and propellers.
2. Controls, instrumentation, and wiring harnesses supplied with the motor and/or drive unit.
3. Batteries
4. Exterior/Interior electronics and their fittings
5. Appliances
6. Trim Tabs
7. Bilge Pumps
8. Windshield wiper motors, arms, and blades.
9. Furniture upholstery, protective covers, carpet, and cabinetry.
10. Windows and window components
11. Decking material
12. Trailers

EXCLUSIONS AND OTHER PROVISIONS

- a) To the fullest extent permitted by law, KingFisher disclaims liability for any express or implied warranties or conditions of sale, including any implied warranties of merchantability or fitness for a particular purpose and any similar term imposed by legislation.
- b) KingFisher disclaims any liability for indirect, incidental, or consequential damages, and third party claims which disclaimer applies during and after the warranty period.
- c) This Warranty is limited to an amount not exceeding the cost of correcting the defects, and shall not exceed the lesser of: (i) the original purchase price paid for the KingFisher boat to an authorized KingFisher dealer; (ii) the current market value of the KingFisher boat, as determined by KingFisher.
- d) KingFisher may in its sole and unfettered discretion elect to replace the hull or any component thereof that is the subject of a warranty claim with a replacement product or component, which may be new or may be used and may be of a different brand, make, model or specification, provided it is in a condition and provides functionality reasonably comparable to the product or component being replaced.
- e) At the expiration of the applicable warranty period, all such liability shall terminate.

- f) No coverage under this Warranty is offered on any KingFisher boat purchased outside of Canada or USA.
- g) Any use of a KingFisher boat outside of Canada or the USA at any time voids all warranty coverage thereafter.
- h) In the event of the illegality or unenforceability of any of the provisions hereof with the laws of any applicable jurisdiction, then KingFisher reserves the right to, in its sole and unfettered discretion, elect to: (i) sever such provisions from this Warranty without limiting the applicability of all other provisions hereof; or (ii) to terminate this Warranty and treat it as being void ab initio and of no effect. Any such election shall be binding on all other interested parties.
- i) KingFisher may require that as a condition of providing coverage for any warranty claim the owner agree to the terms, limitations, exclusions and provisions hereof and releases any other claims available to it in respect of the KingFisher boat.
- j) This Warranty shall be construed strictly in accordance with the laws of British Columbia, Canada, and the courts of British Columbia shall be the sole and exclusive venue of any claim or dispute in respect of this Warranty.

OWNERS RESPONSIBILITIES:

- a) The owner must stop use of any Damaged KingFisher boat or component thereof, as soon as practical to ensure further Damage does not occur. Failure to do so shall void warranty coverage at KingFisher's sole discretion.
- b) The owner must remove all loose personal items, ensure all grey and black water tanks are emptied, and winterize as necessary if there is any chance of freezing, prior to delivering boat for repair. KingFisher does not take responsibility for lost items, or Damage caused by freezing.
- c) Owner must contact their KingFisher dealer and arrange for repair within thirty (30) days of defect discovery. Warranty work will be performed by an authorized KingFisher dealer, KingFisher Factory, or another repair facility approved by KingFisher.
- d) It is the responsibility of the owner to transport the boat to and from any repair facility, or the KingFisher Factory, for warranty repairs.
- e) It is the responsibility of the owner to replace any custom decals or artwork that was removed to allow warranty repair. KingFisher will replace any damaged or removed factory decals or registration identification.

DESIGN CHANGES:

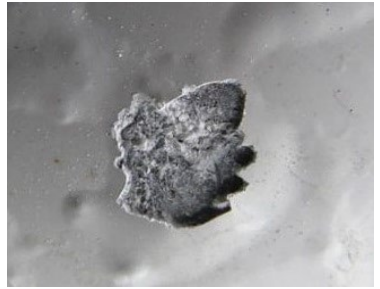
KingFisher reserves the right to make changes to the design, or materials of the product without incurring any obligation to incorporate such changes in any product previously manufactured or sold.

Corrosion Information | Common Types of Corrosion

Galvanic Corrosion - common type of corrosion caused by dissimilar metals. This can occur for a variety of reasons including dissimilar fittings and fasteners in direct contact with bare aluminum, or even loose items like sinkers and old hooks that find their way into the bilge or an inconspicuous area. These dissimilar metals cause galvanic corrosion when immersed together or while in contact with saltwater, brackish or even contaminated freshwater.



Crevice Corrosion - lack of oxygen can be another reason why aluminum corrodes. Standing saltwater, brackish, and even contaminated freshwater sitting in the hull of your boat over a long period of time can cause tiny areas where the oxide layer slowly gets deteriorated. Not having that natural hard protective coating of oxide will cause the aluminum to become pitted over time and could potentially evolve into microscopic pinholes through the hull.



Electrolysis Corrosion - when an electrical component in either the AC or DC system is incorrectly installed or has an electrical fault which leads to ground. This fault doesn't necessarily need to be on your vessel to cause an issue. It could be located on a neighboring vessel or a boat on the other side of the marina connected to the same AC grounding bus on the marina supplied shore power connection. These faults will turn your boat and every other boat in the marina into a battery, with the saltwater as the conducting electrolyte.



Poultice Corrosion – accumulation of debris can create a highly corrosive condition. Combined with aluminum, this debris creates an acidic solution called aluminum hydroxide that can corrode through the parent metal. These areas tend to seriously aggravate aluminum when there is wet-dry cycling.



Identifying and Managing Corrosion

After every voyage you must pay special attention to the overall cleanliness of your vessel. No different than storing your gear and hanging items to dry, there is a need to clean off the saltwater that has come into contact with your vessel during your outing. A thorough freshwater wash down is an effective way to reduce the risk of corrosion, which could require extra maintenance in the future. Places like under your cutting board, aft helm, and nylon downrigger mounts are examples of points of contact that aren't meant to be watertight and should always be well rinsed with fresh clean water after every use. For best results, an initial quick heavy mist will help loosen the dried salt crystals. Follow this up with a heavy rinse working from the top down, putting extra spray into areas with tight contact points that have little chance of drying up quickly on their own.

Bilge compartments must also be kept as clean as possible by flushing with fresh water every time you return to dock. Make sure all internal drain-ways are free from scum build-up and loose debris. If you notice a white powder forming in crevasses it's a sign this area has been overlooked in previous cleaning attempts. Clean this powder with a stainless tooth brush so the aluminum can once again form a new oxide layer. This type of corrosion will require immediate attention to stop further growth and should not be delayed.

Chipped paint from stones while trailering, or a scratch from a loose deck board, will also have a negative effect when in contact with saltwater. Exposed aluminum in your paint finish will allow moisture in between the paint and hull. This will cause paint to blister and peel. It is important to seal any exposed areas to prevent corrosion forming and spreading.

Blistering and peeling paint around fasteners and fittings or chalky white powder is a sign that galvanic corrosion may be taking place. These are areas not properly rinsed from previous trips or areas where movement of a loosened fastener has allowed water to enter and make contact between the stainless fastener and bare aluminum. This component must be removed and the corrosion must be eliminated by light sanding at a minimum. The affected area will then need to be recoated with matching paint. The component should then be reinstalled using the "**New Component Installation Instruction**" guide.

New Component Installation Instruction

If a fixture or addition to your boat becomes loose, it increases the risk of exposure. Check your fixtures regularly. To safely and effectively install or replace components, follow the below instructions.

1. Place component and hole the markings with a pen



2. Ensure there are no obstructions on the back side of your mounting location before drilling.



3. Drill and deburr holes. Clean up all metal chips and shavings so that none will get trapped in your newly installed component



4. Apply a generous amount of sealant such as Sikaflex 291, Loctite UR 3370 or 3M 5200



5. Center the component over pre-drilled holes



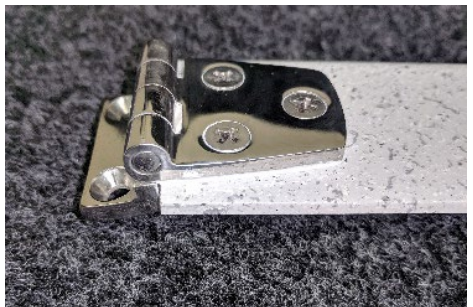
6. Heavily coat all fasteners that will be used to hold the component in place.



7. There should be no visible gaps in the sealant when the component is tightened down.



8. A soapy water solution can be used to clean up the remaining excess sealant.



Sacrificial Anodes and Galvanic Protection

Depending on which model and options you have selected your boat may be equipped with sacrificial anodes and a galvanic protection device.

A galvanic isolator is present on all models equipped with a minimum 30A shore power system, and is installed just after the vessel's shore power connection. Signals can pass through this galvanically isolated circuit, but stray currents, such as differences in ground potential or currents induced by AC and DC power are blocked. Sacrificial anodes on your vessel are part of your cathodic protection system. The anode is made from a metal alloy with a more "active" voltage than the surrounding metal it is protecting. The difference in potential between these two metals means that the sacrificial anode material corrodes in preference to the surrounding area it is protecting.

Anodes do require maintenance to keep them at their peak effectiveness. Repeated cleanings throughout the season with a wire brush may be required to remove any buildup that may form.

The anodes on your vessel should be inspected and cleaned every two months. You should change your anodes after it has corroded to half its original size or when you've accumulated twelve months of immersion in saltwater. When anodes are cleaned or replaced, it must also be verified that they have good continuity with the hull. This is an easy step by using a multi-meter set to the ohms scale.

New Sacrificial Anode



Anode Needing Replacement





BUILDING GREAT BOATS SINCE 1959.



Center of Excellence

8160 Highland Road
Vernon, BC V1B 3W6
TF: 1-888-545-9171

kingfisherboats.com

