

OFFSHORE 3425



What's inside?

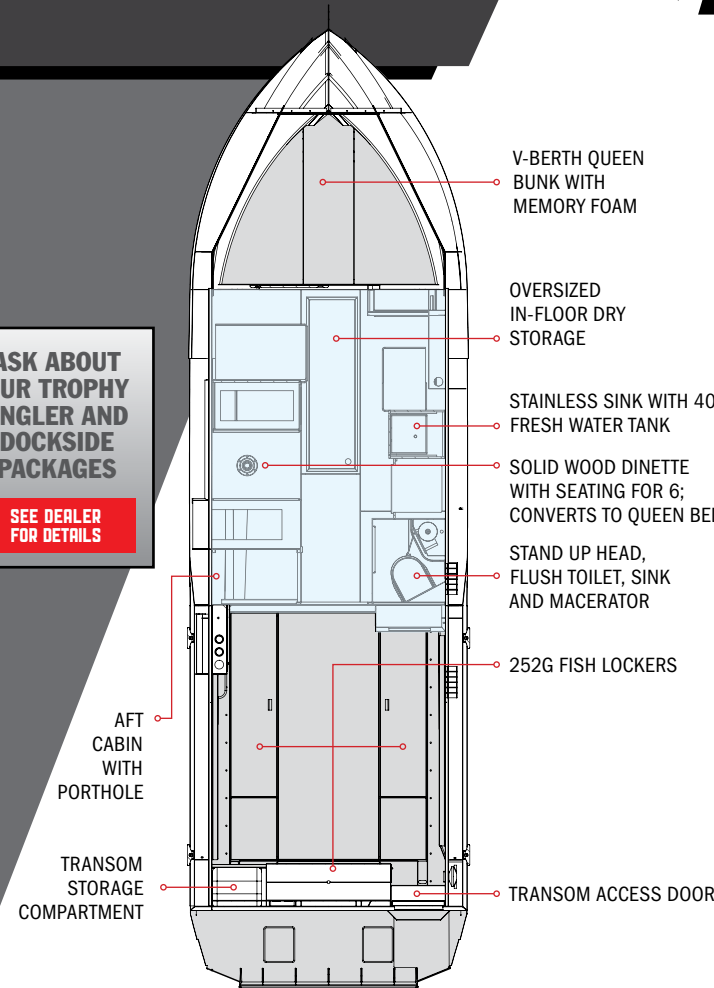
- Shearwater bow design with internally reinforced structural impact grid
- Engineered full length reverse chines and performance lifting strakes
- Port and starboard full suspension helm seats
- Extra large dash for flush mounted electronics
- Dinette seating for 6, converts to a queen sleeping area
- V-berth queen bed with memory foam mattress
- Stand up enclosed head with flush toilet and a 40G holding tank
- Well appointed galley includes 4.3 cubic foot DC fridge
- Two conduction cooled insulated fish lockers in floor with a total volume of 200USG

Choose your interior cabin package:

	WEEKENDER	DESTINATION
ABOUT	True hybrid of practical comfort	Premium cruising comfort. Includes all Weekender features and more
FEATURES	<ul style="list-style-type: none"> • Hand crafted wood cabinets • Port dinette seating with convertible table • Stainless steel sink • Suspension helm seat 	<ul style="list-style-type: none"> • King Leather upholstery • Solid wood radio shelf panel, headstall door and dash trim • Solid wood nightstand with drawer storage

ASK ABOUT OUR TROPHY ANGLER AND DOCKSIDE PACKAGES

SEE DEALER FOR DETAILS



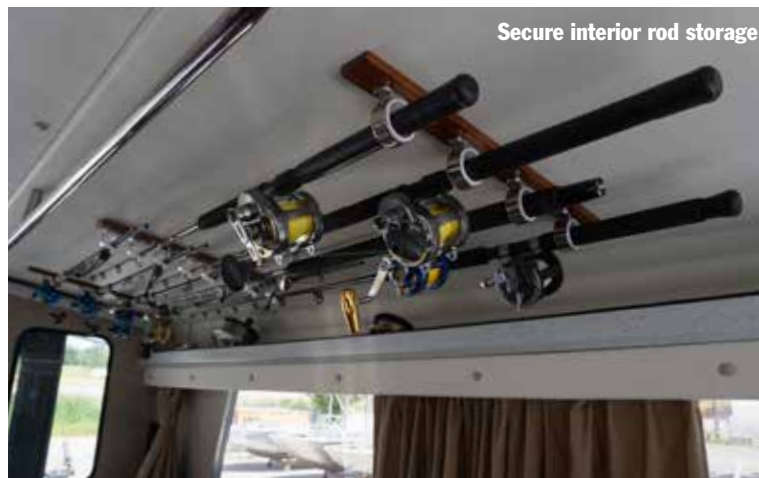
OFFSHORE SPECIFICATIONS

	3425
Length Overall:	35'1"
Beam:	10'
Height of Sides:	42"
Bottom Width:	7'7"
Transom Height:	25"
Cockpit Length:	131"
Cabin Length:	135"
V-berth Length:	74"
Aft Berth Length:	96"
Cabin Headroom:	6'10"
Transom Fish Locker:	197L / 52 USG
Cockpit Floor Fish Lockers:	757L / 200 USG
Approx. Dry Wt:	13,000 lbs
Transom Weight Limit:	1990 lbs
Deadrise:	Variable 18°
Maximum HP:	900 HP
Fuel Capacity:	946L / 250 USG
Side:	0.160
Bottom:	0.250

Extra large dash for flush mounted electronics



Secure interior rod storage



Available center mount kicker or triple main engines

